

# KINGSMILL

CONCRETE PRODUCTS LTD



## QUALITY FENCING

Kingsmill Concrete Products Ltd is a family run business with over 20 years experience in manufacturing quality wet cast concrete products for the construction industry.

Building on this experience, Kingsmill are proud to launch a range of quality fencing posts, plinths and panels.

## Post (INTERMEDIATE)



SIZE (feet)	WEIGHT (kg)	PRICE (ex VAT)	PART CODE
4	26	£10.84	<b>P04Inter</b>
5	34	£11.05	<b>P05Inter</b>
6	40	£11.25	<b>P06Inter</b>
7	45	£11.45	<b>P07Inter</b>
8	50	£11.66	<b>P08Inter</b>
9	56	£12.70	<b>P09Inter</b>
10	62	POA	<b>P10Inter</b>
12	74	POA	<b>P12Inter</b>



## Post (END)



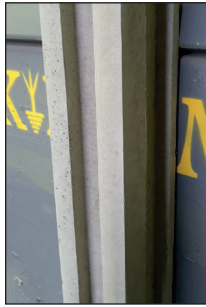
SIZE (feet)	WEIGHT (kg)	PRICE (ex VAT)	PART CODE
4	30	£11.59	<b>P04End</b>
5	35	£12.30	<b>P05End</b>
6	42	£12.50	<b>P06End</b>
7	50	£13.20	<b>P07End</b>
8	58	£13.16	<b>P08End</b>
9	68	£13.70	<b>P09End</b>
10	78	POA	<b>P10End</b>
12	98	POA	<b>P12End</b>



## Post (CORNER)



SIZE (feet)	WEIGHT (kg)	PRICE (ex VAT)	PART CODE
4	35	£11.79	<b>P04Corner</b>
5	43	£12.60	<b>P05Corner</b>
6	51	£12.90	<b>P06Corner</b>
7	59	£13.90	<b>P07Corner</b>
8	67	£14.16	<b>P08Corner</b>
9	75	£14.70	<b>P09Corner</b>
10	83	POA	<b>P10Corner</b>
12	102	POA	<b>P12Corner</b>



## Post (TEE)

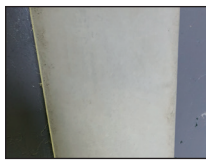


SIZE (feet)	WEIGHT (kg)	PRICE (ex VAT)	PART CODE
4	34	£14.00	<b>P04Tee</b>
5	39	£14.00	<b>P05Tee</b>
6	47	£14.50	<b>P06Tee</b>
7	55	£14.50	<b>P07Tee</b>
8	63	£15.00	<b>P08Tee</b>
9	71	£15.00	<b>P09Tee</b>
10	79	POA	<b>P10Tee</b>
12	94	POA	<b>P12Tee</b>



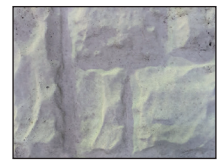
## Plain Face Plinths

SIZE (feet)	WEIGHT (kg)	PRICE (ex VAT)	PART CODE
6	25	£8.55	<b>PPL6"</b>
12	50	£10.00	<b>PPL12"</b>



## Stone Face Plinths

SIZE (feet)	WEIGHT (kg)	PRICE (ex VAT)	PART CODE
6	26	£8.55	<b>SPL6"</b>
12	25	£10.25	<b>SPL12"</b>



## Rock Face Plinths

SIZE (feet)	WEIGHT (kg)	PRICE (ex VAT)	PART CODE
6	26	£8.55	<b>RPL6"</b>
12	25	£10.25	<b>RPL12"</b>



## Stone Face Plinths - Convex (ARCH) Top

SIZE (feet)	WEIGHT (kg)	PRICE (ex VAT)	PART CODE
12	82	£15.87	<b>SCONPL</b>



## FENCE PANELS

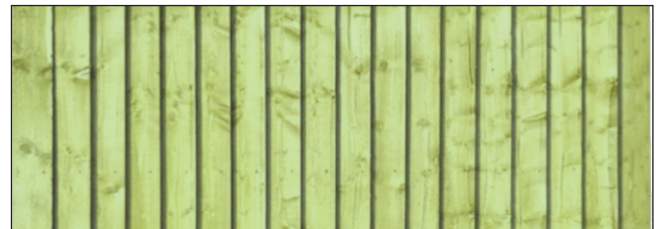
Our Heavy Duty Vertilap tanalised, feather edge fence panels are perfect to frame your garden in a traditional way. Whether a new boundary, or simply to replace existing panels, this fencing will provide privacy so you can enjoy spending time in your garden.

These fence panels are manufactured using the Panelmaster System for a perfect panel. They use the best quality boards and framework to ensure a high quality product, along with being dip treated to ensure longevity and to reduce maintenance.

### Vertilap Tanalised Fence Panels

SIZE (feet)	PRICE (ex VAT)	PART CODE
6 x 3	£27.00	<b>HDTP3</b>
6 x 4	£28.00	<b>HDTP4</b>
6 x 5	£29.00	<b>HDTP5</b>
6 x 6	£30.00	<b>HDTP6</b>

Vertilap Panels come with 47mm (W) x 30mm back framing and are made with 22mm x 100mm wide feather edge board per panel for added strength.



### Kingsmill Concrete Products Ltd

Hill Farm  
Laxton Road  
Egmanton  
Notts, NG22 0NS

Tel: 01623 869333

Email: [sales@kingsmill-concrete.co.uk](mailto:sales@kingsmill-concrete.co.uk)

Web: [www.kingsmill-concrete.co.uk](http://www.kingsmill-concrete.co.uk)

**KINGSMILL**  
CONCRETE PRODUCTS LTD